

Word of the Day

Autumn Term 2024

Week 12 – 25th November 2024



'Words unlock the doors to a world of understanding...'

This Week's Words

Grasshopper

slide

filthy

target

sweep

thief

Shinobi

tolerate

thwart

tease

solitary

observe



VOCABULARY NINJA

Grasshopper (Tier 1)

slide

filthy

target

sweep

thief



VOCABULARY NINJA

Shinobi (Tier 2)

tolerate

thwart

tease

solitary

observe



VOCABULARY NINJA



Grasshopper Word of the Day

Word of the Day:

Pronunciation / Syllables

slide
(slide)

Word Class
(verb / noun)

Definition:

When something slides somewhere or when you slide it there, it moves there smoothly over or against something.



Coby was warned not to **slide** on the ice.

Synonym:

drift

glide

Antonym:

remain

stay

Prefix / Suffix:

-er

-ing

Rhyme:

tried

wide

Link Word:

slowly

quickly



Grasshopper Word of the Day

Word of the Day:

Pronunciation / Syllables

filthy
(*filth-y*)

Word Class
(adjective)

Definition:

Something that is filthy is very dirty indeed.



Penny's t-shirt was **filthy**.

Synonym:

grimy

grubby

Antonym:

clean

pure

Prefix / Suffix:

Rhyme:

Link Word:

extremely

incredibly



Grasshopper Word of the Day

Word of the Day:

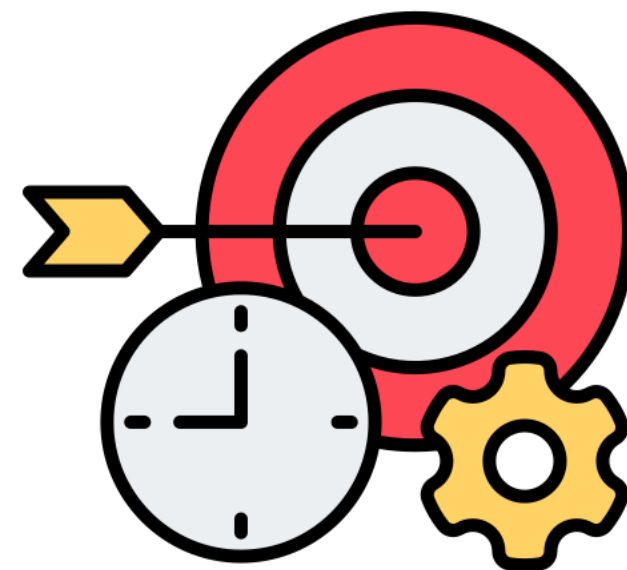
Pronunciation / Syllables

target
(tar-get)

Word Class
(noun)

Definition:

A target is a result that you are trying to achieve.



Mr Gilraine set a **target** for the class to finish their work.

Synonym:

goal

object

Antonym:

Prefix / Suffix:

-ed

-ing

Rhyme:

Link Word:

realistic

ambitious



Grasshopper Word of the Day

Word of the Day:

Pronunciation / Syllables

sweep
(sweep)

Word Class
(verb)

Definition:

If you sweep an area of floor or ground, you push dirt or rubbish off it using a brush with a long handle.



Umar was asked to **sweep** up the crumbs.

Synonym:

clean

clear

Antonym:

Prefix / Suffix:

-er

-ing

Rhyme:

keep

deep

Link Word:

quick

gentle



Grasshopper Word of the Day

Word of the Day:

Pronunciation / Syllables

thief
(*thief*)

Word Class
(noun)

Definition:

A thief is a person who steals something from another person.



Gangsta Granny was a **thief**.

Synonym:

criminal

crook

Antonym:

law

police

Prefix / Suffix:

Rhyme:

chief

leaf

Link Word:

petty

skilled



Shinobi Word of the Day

Word of the Day:

tolerate
(tol-er-ate)

Word Class
(verb)

Pronunciation / Syllables

Definition:

If you tolerate a situation or person, you accept them although you do not particularly like them.



Mr Abimbola would **tolerate** any mistakes the class made.

Synonym:

accept

permit

Antonym:

deny

refuse

Prefix / Suffix:

-ed

-ing

Rhyme:

operate

moderate

Link Word:

fairly

moderately



Shinobi Word of the Day

Word Class
(verb)

Word of the Day:

thwart
(*thwart*)

Pronunciation / Syllables

Definition:

If you thwart someone or thwart their plans, you prevent them from doing or getting what they want.



Ms Hill **thwarted** the prank before it began.

Synonym:

counter

hinder

Antonym:

aid

encourage

Prefix / Suffix:

-ing

-ed

Rhyme:

court

short

Link Word:

deliberately

skilfully



Shinobi Word of the Day

Word Class
(verb)

Word of the Day:

tease
(tease)

Pronunciation / Syllables

Definition:

To tease someone means to laugh at them or make jokes about them in order to embarrass, annoy, or upset them.



Mrs Hart told the class it wasn't nice to tease.

Synonym:

harass

mock

Antonym:

delight

please

Prefix / Suffix:

-ed

-ing

Rhyme:

these

knees

Link Word:

harsh

lovingly



Shinobi Word of the Day

Word of the Day:

Pronunciation / Syllables

solitary
(sol-i-tar-y)

Word Class
(adjective)

Definition:

A person or animal that is solitary spends a lot of time alone.



Pearl enjoyed a **solitary** moment in class.

Synonym:

lone
singular

Antonym:

together

Prefix / Suffix:

Rhyme:

Link Word:

become
prefer



Shinobi Word of the Day

Word Class
(verb)

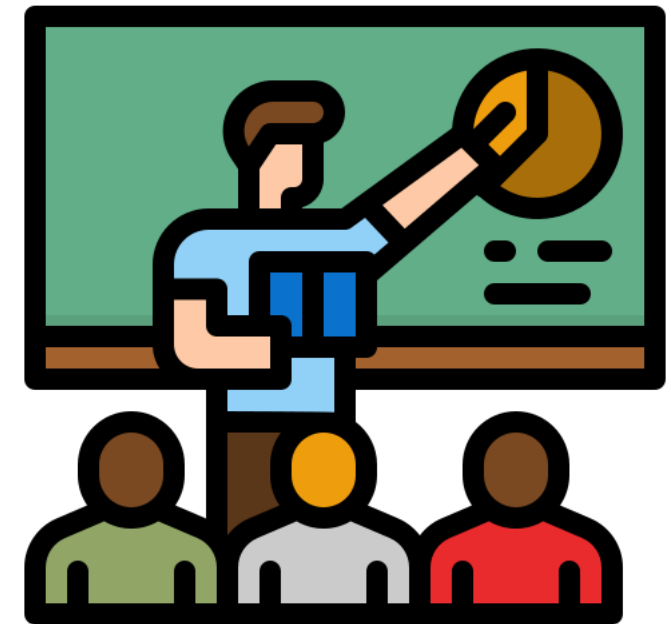
Word of the Day:

Pronunciation / Syllables

observe
(ob-serve)

Definition:

If you observe a person or thing, you watch them carefully, especially in order to learn something about them.



The class **observed** Mr Nim writing on the board.

Synonym:

inspect

study

Antonym:

ignore

overlook

Prefix / Suffix

-ed

-ing

Rhyme:

curve

nerve

Link Word:

patiently

closely

Vocabulary Laboratory



Describe / Definition:

Use it in a sentence:

Focus Word (write below):

Word Class:

Synonyms:

(words with same / similar meaning)

Antonyms:

(words with opposite meaning)

Draw your sentence:

Rhymes:

(words that sound the same)

Link Words:

(Example: football = pitch, team, player)

Vocabulary Visualiser

Draw the
Grasshopper words
and bring them to life.



Word: slide

Word: sweep

Word: filthy

Word: thief



Vocabulary Visualiser

Draw the **Shinobi**
words and bring
them to life.



Word: tolerate

Word: solitary

Word: thwart

Word: observe



Matching Meanings

Draw lines from the **Grasshopper** words to their definitions.



Grasshopper Word

Grasshopper Definitions

slide

Something that is *** is very dirty indeed.



filthy

If you *** an area of floor or ground, you push dirt or rubbish off it using a brush with a long handle.



target

When something *** somewhere or when you *** it there, it moves there smoothly over or against something.



sweep

A *** is a person who steals something from another person.



thief

A *** is a result that you are trying to achieve.



Matching Meanings

Draw lines from the **Shinobi** words to their definitions.



Shinobi Word

Shinobi Definitions

tolerate

A person or animal that is *** spends a lot of time alone.



thwart

To *** someone means to laugh at them or make jokes about them in order to embarrass, annoy, or upset them.



tease

If you *** a person or thing, you watch them carefully, especially in order to learn something about them.



solitary

If you *** someone or thwart their plans, you prevent them from doing or getting what they want.



observe

If you *** a situation or person, you accept them although you do not particularly like them.





Display Slips

The following slides are for classroom display. As you teach each Word of the Day, words can be displayed in the classroom to enable pupils to use the taught vocabulary in an independent manner.





slide

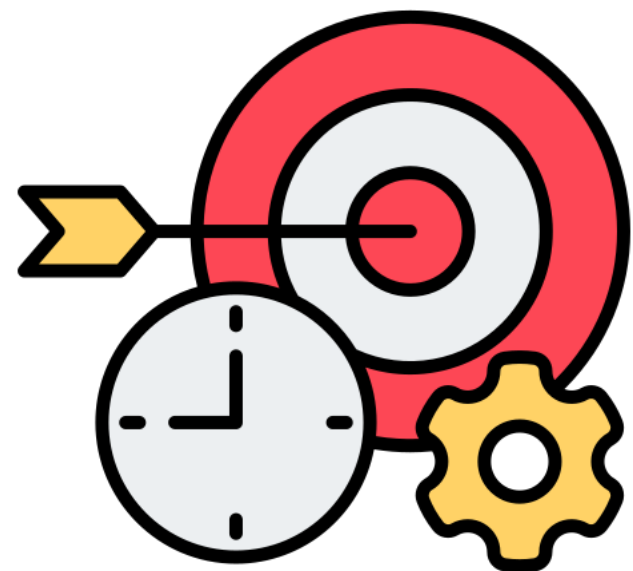


filthy





target



sweep





thief



tolerate





thwart

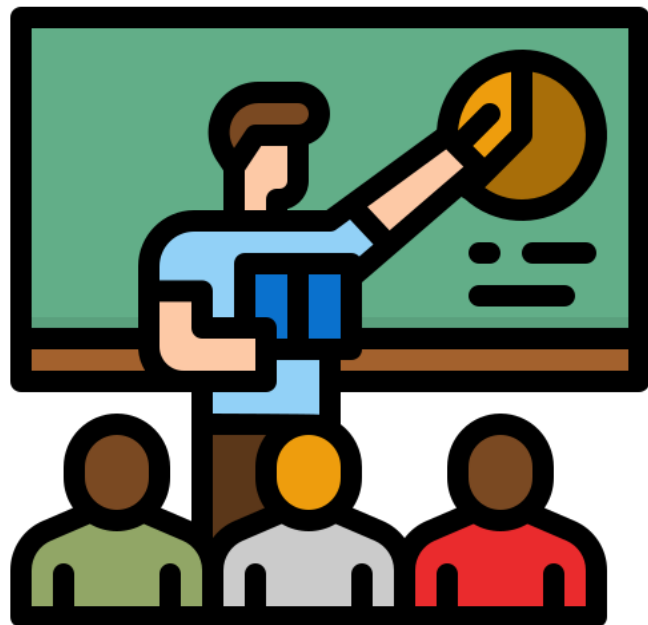


tease





solitary



observe





Font Variation

The following display slips contain the same words, but have a more regular font, which have a more regular formation of 'a' and 'g'. Futura is the name of the font.




worried



opini

asure



dia





slide

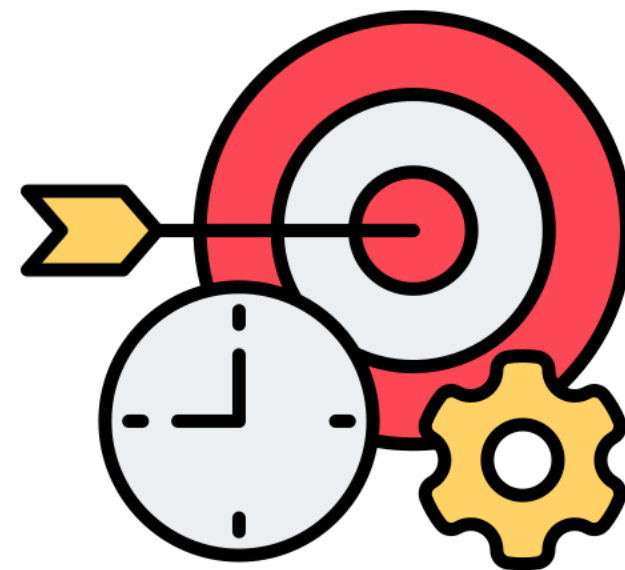


filthy





target



sweep





thief



tolerate





thwart

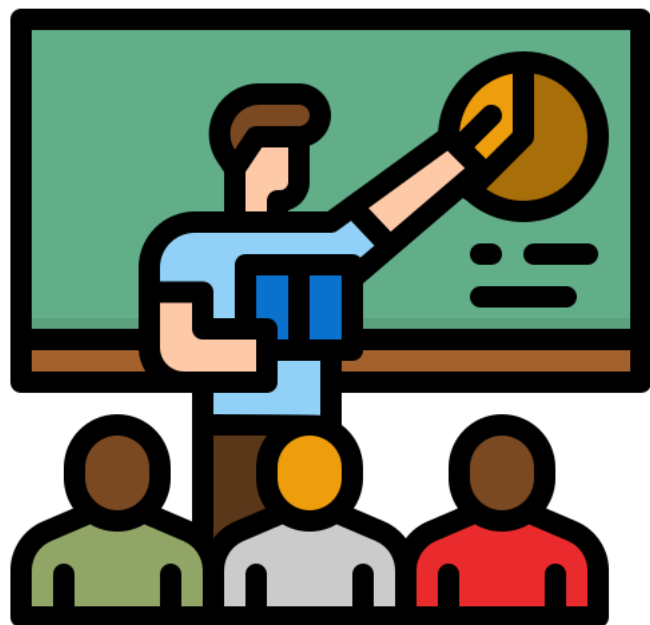


tease





solitary



observe

